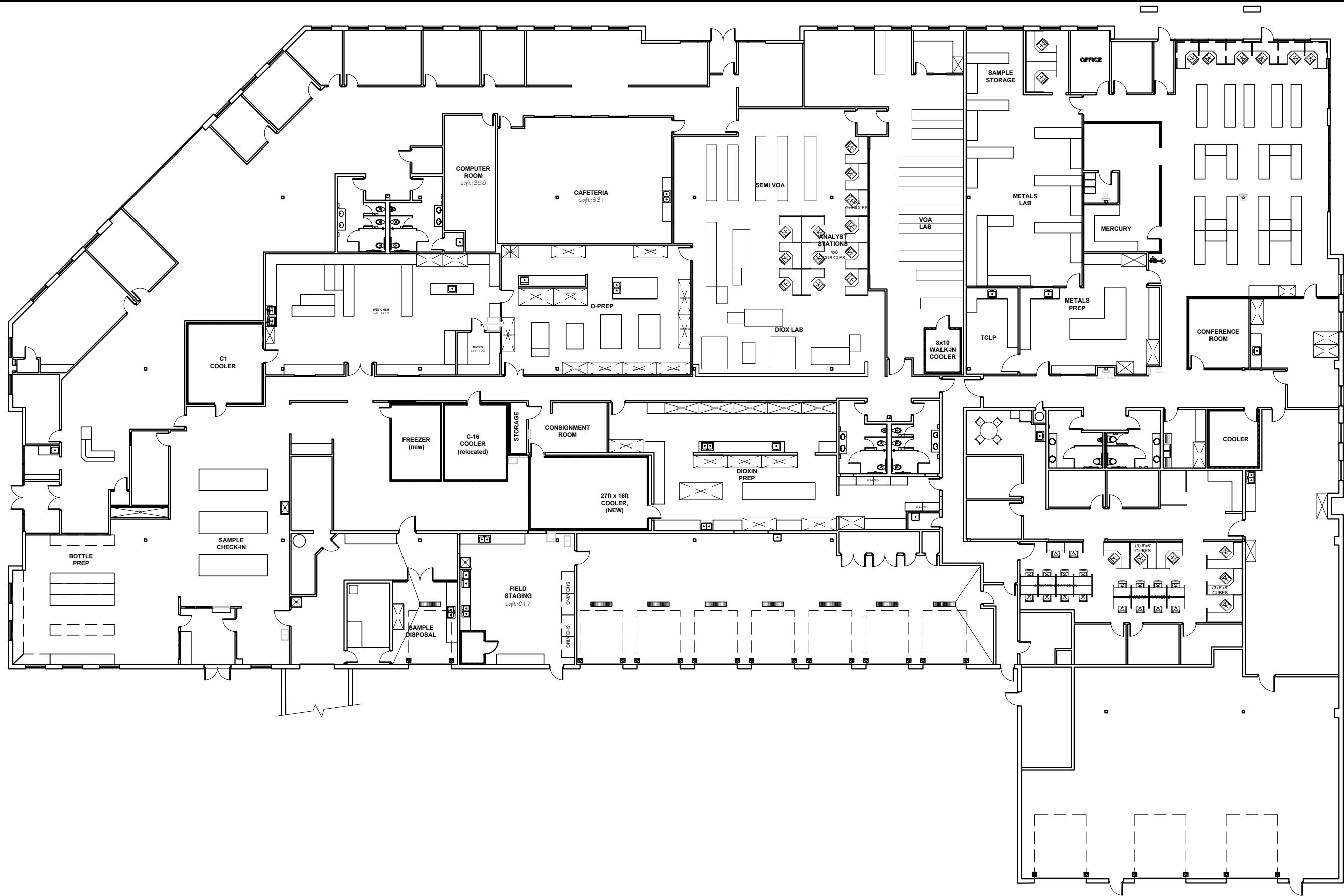


• **End**

• **End**

• **End**





Project:	Corporate Headquarters
Address:	1700 Elm St. Minneapolis MN, 55414
Drawn By:	Jcp
Approved By:	Bob Wilkins
Date:	10/08/20

In house drawing, not intended for construction.

Drawing Title:	Facility Remodeling Floor Plan
Plotting Scale:	NOT TO SCALE
Revision:	no. 4

Drawing No.

R1

Main Laboratory Building

Safety Glasses

Required in Shaded Areas

